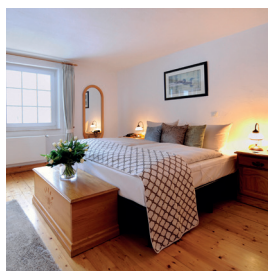


# VAN DER VALK\*\*\*\* GOLFHOTEL SERRAHN

Dobbiner Weg 24 | 18292 Serrahn  
+49 (0) 38456 66920 | serrahn@vandervalk.de  
[www.vandervalk.de/serrahn](http://www.vandervalk.de/serrahn)



**AMIDST THE MECKLENBURG LAKE DISTRICT** on the Lake Krakow surrounded by green grass lands, wide fields and forests there is our Golfhotel Serrahn located.

Besides 34 stylishly furnished rooms, we have a modern restaurant with fresh and regional meals, winter garden, great sun terrace with rank greening as well as an idyllic barbecue place. Additionally the hotel has its own 18-hole golf course. Golf can't be closer to nature and more relaxed. Golfers of all handicap categories to the point of first-time users or try-out golfers can witness closely the unique combination of sport and nature. Weekly Try-out Golf for groups from € 9,00 p. p. (april - october). Walk through the wild-romantic Nebeltal on the numerous trails of the environment, cycle round Lake Krakow. Golfhotel Serrahn is the ideal place to dangle the soul or to spend the most beautiful time of the year.



## GROUP RATES B&B 2024\*

Rates from:	PP in Double	Single Suppl
<b>Season 1</b> 01.01.2024 - 31.03.2025		
Mon - Sun	€ 61,50	€ 34,00

## ADDITIONAL SERVICES

**Lunch and dinner** p.p.p.d.

3-course menu or dinner buffet from € 32,50

**Stop over** p.p.p.d.

Breakfast buffet from € 19,50

Plat du Jour on request

Our prices are available for 2 nights per person and night including a comprehensive breakfast buffet.

Further room categories are available upon request.

Group rates are available for groups of 30 or more persons.

Extra conditions such as LOS or mandatory purchase of HB may apply.

## YOUR BONUS

1 x ½ double room free of charge per 21 paying guests, a second ½ double room per 40 paying guests.

## ACTIVITIES

- Hanseatic cities like Wismar (80 km), Rostock/ Warnemünde (110 km) and Hamburg (150 km)
- Provincial capital Schwerin with a guided castle visitation (45 km)
- Güstrow - castle visitation and viewing the Barlach memorial (66km)
- Plau am See - boat ride on the lake district from Plau to Waren/ Röbel (40 km)
- Lübz - brewery viewing and beer tasting (not on Saturday and Sunday) (23 km)
- Horse-drawn carriage rides or hikes through the nature reserve Lewitz
- Bicycle tours (bike rental at the hotel)
- Raduhn - pottery Hohenwoos
- Vielank - brewery visitation (50 km)
- Alt Dammerow - visit the ancient farm Pingelhof per annum 1665 (8km) with bread baking in the brick oven and coffee and cake
- Ludwigslust - visit the castle with its park and the church
- Parchim - guided tour through the historic centre and its churches and museums
- Groß Raden - trip to the archaeological open-air museum (50 km)

\* Extra supplements or restrictions may apply for certain days.



34



2



18-hole-golf

